

Bowker Creek Watershed Management Plan

Presented by:
Bowker Creek Watershed Forum
 Interim Steering Committee
August 2003

Outline



- Project background
- Location of watershed
- Tour of Bowker Creek
- Vision and Goals of the Watershed Plan
- Community involvement
- Summary

Project background

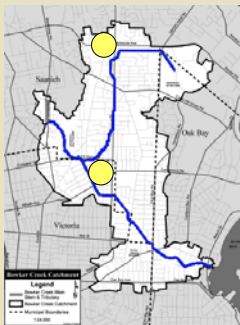


- Bowker Creek Watershed crosses multiple municipal boundaries
- CRD Core Area Waste Management Plan
- Watershed Assessment (2000)
- Watershed Management Forum (2002)
- Watershed Plan completed (Jan 2003)
- Plan approved in principle by CRD Board (March 2003)

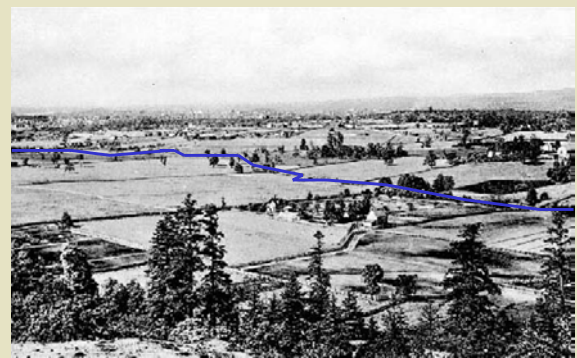
Location of the watershed



Location of the watershed



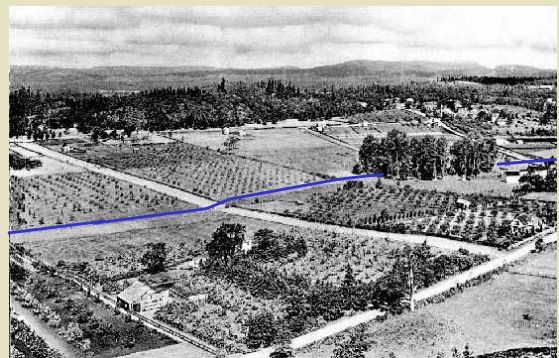
- Area ~ 1,020 ha
 - 59% in Saanich
 - 23% in Victoria
 - 17% in Oak Bay
- Main channel ~ 8 km long
- > 60% in culverts
- ~ 30,000 residents



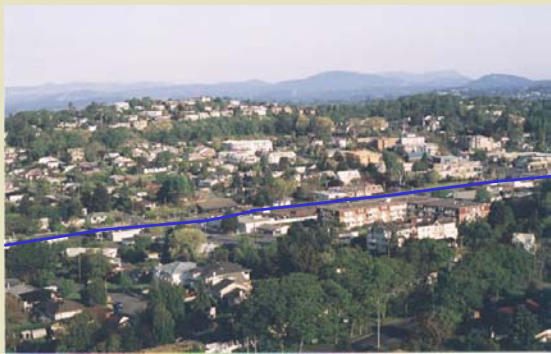
Mt. Tolmie summit looking downtown - 1901



Mt. Tolmie summit looking downtown - **2003**



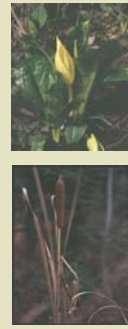
Shelbourne Valley - **1901**



Shelbourne Valley - **2003**

Tour of Bowker Creek - *Start*

U-Vic
Headwaters
(Saanich/Oak Bay)



Tour of Bowker Creek

Shelbourne Valley
(Saanich)



Tour of Bowker Creek

Browning Gyro
Park
(Saanich)



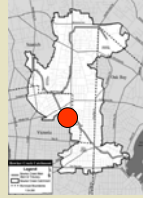
Tour of Bowker Creek

Cedar Hill Park & Golf Course
(Saanich)



Tour of Bowker Creek

Spirit Garden
(Victoria)



Tour of Bowker Creek

Kings/Richmond
(Saanich)



Tour of Bowker Creek

Jubilee Hospital
(Saanich)



Tour of Bowker Creek

St. Patrick's School
(Saanich/Victoria)



Tour of Bowker Creek

Oak Bay High School



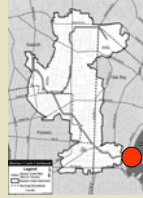
Tour of Bowker Creek

Bowker Creek Park



Tour of Bowker Creek - Finish

Oak Bay Estuary



Current Issues



Flooding

- Impermeable surfaces
- High peak flows
- Low base (summer) flows
- Safety and liability
- Infrastructure maintenance and replacement

Current Issues



Current issues



Water quality

- oil, sediments, bacteria
- heavy metals
- increased temperature

Habitat loss



Current issues

Greenways connections



Vision statement



"The varied human uses and natural areas in the Bowker watershed are managed to minimize runoff and pollution, making Bowker Creek a healthy stream that supports habitat for native vegetation and wildlife, and to provide a community greenway that connects neighbourhoods"



Goal 1

- Individuals, community groups and special interest groups, institutions, governments and businesses take responsibility for actions that affect the watershed



Goal 2



- Manage stream flows effectively



Goal 3

- Improve and expand public areas, natural areas and biodiversity in the watershed



Goal 4

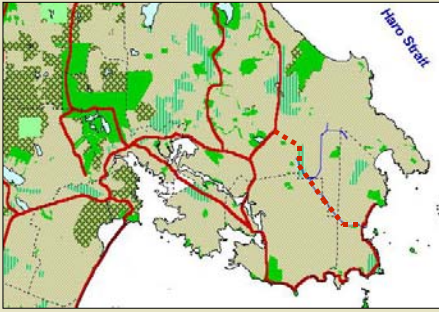
Achieve and maintain acceptable water quality in the watershed



Integrated solutions



- Federal initiatives
- Provincial Stormwater Guidebook
- Regional Growth Strategy
- Municipal/Regional Greenways
- Infrastructure management and coordination
- North East Trunk Sewer replacement



Example: Regional Green/Blue Spaces System

Community Associations within the Bowker Creek Watershed



Summary



- Broad social, economic, and environmental benefits
- Supports other key municipal and regional initiatives
- Strong community support
- Many plan elements already underway
- Adopt staff report and recommendations